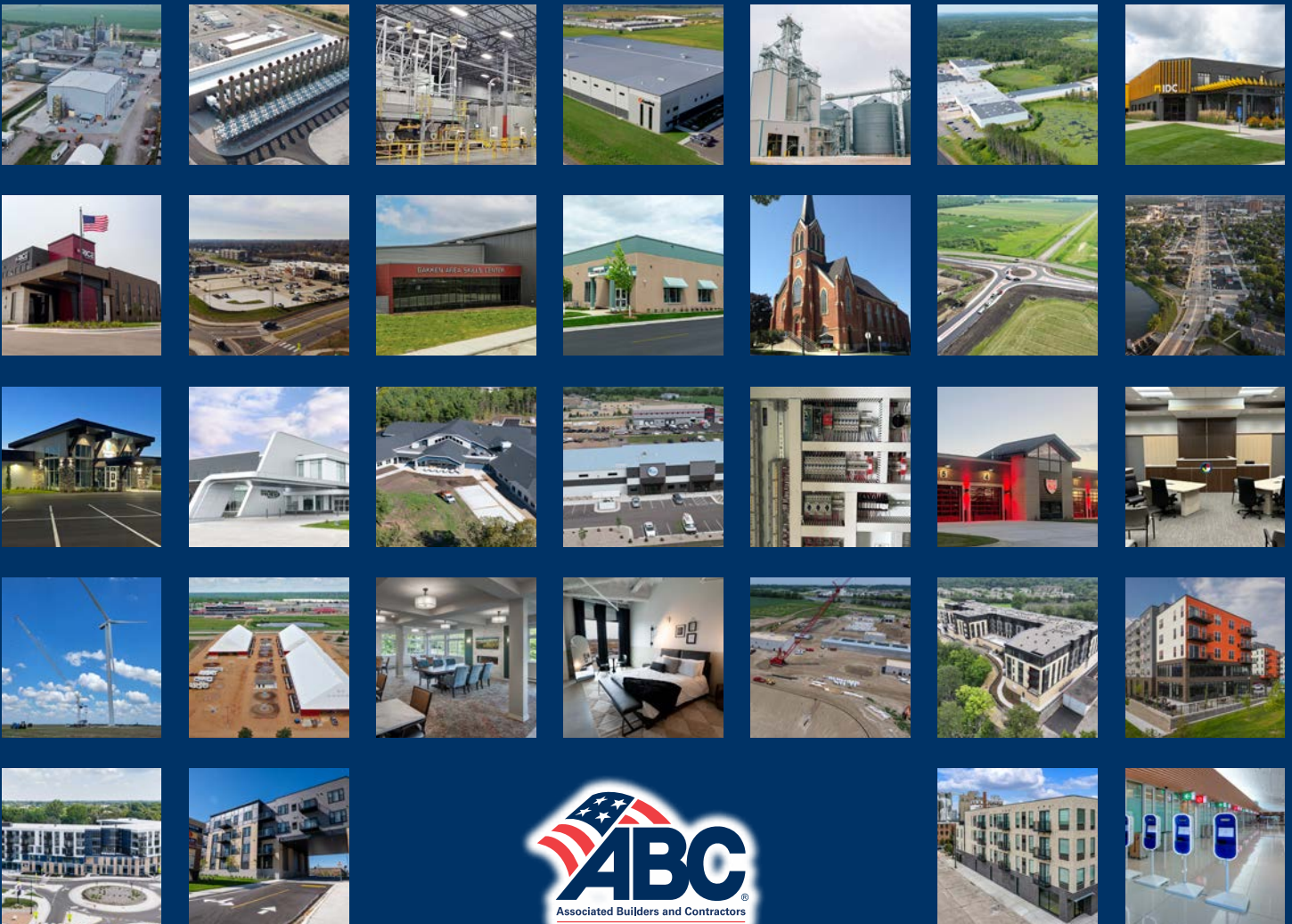


Excellence in Construction AWARDS

2024 PROJECT WINNERS



STEVENS

A self-performing general contractor bringing bold visions to life - every day. THANK YOU to our clients, partners and team members who make it possible.



**We are grateful to be recognized by
ABC-MN/ND for the following projects:**

Minnetonka Station • Lilia • Meadowood Shores

Excellence in Construction Awards



TABLE OF CONTENTS

| | |
|--|-------|
| STEP Awards | 3 |
| 2024 New Member of the Year | 4 |
| 2024 ABC Woman In Construction of the Year | 4 |
| 2024 Excellence Award Winners | |
| Mega Projects | 5 |
| Industrial Construction | 6-11 |
| Commercial Construction | 12-13 |
| Institutional Construction..... | 14-16 |
| Infrastructure - Heavy | 17 |
| Infrastructure..... | 18 |
| Healthcare | 19-21 |
| Pre-Engineered Buildings | 22 |
| Electrical - Industrial | 23 |
| Electrical - Commercial..... | 24-25 |
| Other Construction..... | 26-27 |
| Renovation..... | 28-29 |
| Public Works/Environmental..... | 30 |
| Residential - Multi-Family..... | 31-35 |
| Specialty Contracting - Interiors | 36 |

Associated Builders and Contractors, Inc. Minnesota/North Dakota Chapter

| | |
|---|--|
| Minnesota Chapter 10193 Crosstown Circle, Eden Prairie, MN 55344 Phone: (952) 941-8693 www.mnabc.com | North Dakota Council 4511 15th Avenue Fargo, ND 58102 Phone: (701) 238-8853 www.ndabc.com |
|---|--|

ABC MN/MNOSHA Partnership

LEVEL 1

- Berd Electric
- Cedar Lake Electric, Inc. 2020
- Dale Gruber 2020
- Electrical Production Services 2020
- Fagen, Inc 2020
- Horizon Roofing 2020
- J-Berd Mechanical 2020
- Kuepers Architects & Builders
- Laketown Electric 2019
- Security Fire Sprinkler
- Stevens Construction

LEVEL 2

- Bauer Design Build, LLC 2020
- Enclave Construction
- Greystone Construction 2020
- Larson Building Inc. 2019
- Lyon Contracting 2020
- Marcus Construction 2020
- MinDak Commercial Construction 2019
- NATCON Group, Inc
- Nor-Son 2020
- Rice Companies 2019
- Schwickert's 2020
- Stotko Speedling 2020
- Willmar Electric Service 2020
- Yellow Tree Construction Services

LEVEL 3, Cooperative Compliance Partnership

- Bauer Design Build
- Enclave Construction
- Greystone Construction
- Larson Building
- Lyon Contracting
- Marcus Construction
- Rice Companies

STEP Awards - For Contractors Who Promote Safety

ABC's STEP Safety Management System (STEP) recognizes the efforts of ABC members that strive to achieve effective safety practices at their firms and provides contractors with a tool to objectively evaluate their safety programs, policies, procedures and training. Using a template provided by ABC National, contractors evaluate their programs and receive certificates for qualifying at the Bronze, Silver, Gold, Platinum or Diamond levels. Contractors can use the one-year STEP certification as a business marketing tool and to improve safety at their firms.

2024 MN/ND ABC STEP Winners

DIAMOND LEVEL

- Bauer Design Build, LLC
- Bladholm Construction
- Brennan Construction of MN, Inc.
- Conductor Power, LLC
- Gordon Construction
- Integrated Building Solutions
- Larson Building, Inc.
- Lyon Contracting, Inc.
- Marcus Construction
- Mindak Commercial Construction
- NATCON Group, Inc
- Olaf Anderson Construction, Inc.
- Oxentenko, Inc.
- Turner Industries Group, LLC

PLATINUM LEVEL

- A.J. Moore Electric, Inc.
- Custom Aire, Inc.
- Interstates
- Knobelsdorff Enterprises
- McCormick Construction Company
- PKG Contracting, Inc.
- Royal Construction, Inc.
- The Weitz Company
- Wanzek Construction, Inc.
- Wieser Brothers General Contractor, Inc.
- Wolf Construction Services, Inc

GOLD LEVEL

- BCI Construction, Inc.
- Building Restoration Corporation
- Electrical Production Services, Inc.
- Fagen, Inc.
- Schwickert's Tecta America LLC

SILVER LEVEL

- D & G Excavating, Inc.
- Derrick Companies
- Elcor Construction, Inc.
- Enclave Construction, LLC
- Grazzini Brothers & Co.
- KMI Mechanical Inc.
- Sand Construction, LLC
- Stotko Speedling Construction, Inc.
- Wilcon Construction Services LLC
- Willmar Electric
- Yellow Tree Construction Services LLC

BRONZE LEVEL

- Abhe & Svoboda, Inc.
- Berd Electric, LLC
- Bergstrom Electric, Inc.
- Cedar Lake Electric, Inc.
- Comstock Construction
- Construction Engineers, Inc.
- Construction Ventures, Inc. dba Schwab Construction
- Dale Gruber Construction, Inc.
- Greystone Construction Company
- Horizon Roofing, Inc
- Hy-Tec Construction
- J-Berd Mechanical Contractors, Inc.
- John T. Jones Construction Co.
- Kuepers Inc Architects & Builders
- Laketown Electric Corporation
- Lunseth Plumbing & Heating Co., Inc.
- MCI Paint & Drywall
- Nelson Electric Co. LLC
- Niemela Design and Construction LLC
- Nor-Son, Inc.
- R. J. Zavoral & Sons, Inc.
- Rice Companies
- Roers Construction Joint Venture, LLC
- SCR
- Security Fire Sprinkler, LLC
- Standard Heating & A/C Co.
- Stevens Construction Corp.
- Sussner Construction
- Vos Construction Inc.

2024 New ABC Member Of The Year Fresh Paint, Inc.



Fresh Paint joined ABC MN to connect with clients and align with an organization that reflects our values. Many of our clients were already members, and ABC's reputation as a leader in safety resources made it an ideal fit. Safety is a cornerstone of our operations, and ABC's programs have enhanced our ability to protect our team and partners. Additionally, ABC's advocacy for merit

shops—promoting fairness, legal integrity, and competitive practices in the construction industry—perfectly aligns with our principles.

Participating in ABC MN events has been invaluable. These gatherings offer excellent networking opportunities, professional growth, and the chance to build strong relationships with other like-minded businesses.

Fresh Paint has worked on notable projects, including the Landmark Center revitalization in St. Paul, MN, where our team restored intricate plaster and painted historic ceilings, walls, and columns in just 30 days. This legacy

project demonstrated our technical skill and respect for historical integrity. Another highlight was our work on Northern Stacks, a 500,000-square-foot industrial campus in Minneapolis, where we met strict timelines and safety standards without disrupting operations.

Guided by professionalism and transparency, we prioritize client satisfaction. One long-standing client praised our durability and reliability, stating, "They've delivered exceptional results, even in challenging environments."

Fresh Paint is also deeply committed to community involvement. We've raised funds for organizations like Beyond the Yellow Ribbon, hosted food drives, supported charity events, and contributed to causes that strengthen the communities we serve. Through ABC MN membership and our continued efforts, we're proud to foster connections, drive excellence, and give back to those who support us.

2024 Woman In Construction of the Year Profile Rachel Gruber, Dale Gruber Construction



Rachel Gruber has become a trailblazer in the construction industry, leading Dale Gruber Construction (DGC) as its owner and president since January 2022. Having joined

the company in 2008 as a marketing and business development director, she has climbed the ranks through dedication and innovation. Since taking the helm, Rachel has managed major projects, including a 48,000-square-foot remodel for Midland Credit and securing an expansive maintenance contract with one of the nation's largest banks. Her commitment to exceptional customer service ensures repeat business, as she trains her team to prioritize client needs and maintain ongoing relationships.

Under Rachel's leadership, DGC's values of honesty, trust, and exceeding customer expectations remain central. She champions follow-up practices to ensure client satisfaction,

fostering a reputation for excellence in both residential and commercial projects.

Rachel is also a passionate advocate for the trades and education. She played a pivotal role in launching the CMBA "Tools for Schools" program, raising funds for high school trade programs, benefiting 17 central Minnesota schools this year alone. Her dedication inspires the next generation, particularly young women, to explore careers in construction and challenge industry norms.

Beyond her professional achievements, Rachel actively supports her community through initiatives like reading to children with United Way and contributing to Quiet Oak Hospice House. As an ABC MN leader, she promotes merit shop principles, engages in legislative advocacy, and encourages collaboration among ABC members.

Testimonials from employees and partners highlight Rachel's inspiring leadership, dedication to her team, and commitment to delivering quality results. Rachel's resilience in a male-dominated industry is transforming perceptions, proving that women can excel in construction and setting a powerful example for others to follow. Her work is not only building projects but also a brighter future for the industry.

★ INDUSTRIAL CONSTRUCTION

| | |
|------------------|--------------------------|
| Category: | Over 20 Million |
| Company: | Fagen, Inc. |
| Award: | Honorable Mention |
| Project: | Project Oracle |



Fagen, Inc. recently completed a demonstration facility near York, Nebraska, showcasing a groundbreaking cellulosic ethanol technology—a first in the industry. This project, a collaborative venture between Shell Oil and Green Plains Renewable Energy, had American Process International, LLC (API) as the design engineer. The facility refines byproducts from an existing plant through proprietary processes, with plans to scale up nationwide. Fagen, Inc.'s engagement with Shell and Green Plains began during development, providing pre-construction expertise on a Time and Material basis for 18 months. This ensured optimal project setup before transitioning to construction, which was managed under a Lump Sum Agreement to minimize owner risk.

Upon construction completion, the project moved to post-construction support, again under a Time and Material arrangement, making Fagen's involvement nearly three years in total. Initially contracted for \$15.4 million, the project now stands at around \$23 million after change orders. With a compact 200x140-foot footprint, the build spanned one year, with Fagen self-performing 95% of work, except for specialized crane services and insulation. Local and regional skilled labor, recruited through job fairs and social media, filled workforce needs. Fagen's ongoing support highlights its commitment to quality and partnership in advancing sustainable biofuel innovation.



ABC creates invaluable opportunities for members to

CONNECT

ABC is dedicated to helping our members—self-made men and women—build and sustain strong business relationships. The as-association cultivates members who are job creators, drawn to ABC for the opportunity to connect.

Count on ABC to spark the best connections.

ABC—Helping members win work and deliver work safely, ethically and profitably for the betterment of the communities in which they work.

TOUGH. TRUSTED. CONNECTED.

Visit mnabc.com or ndabc.com to learn more.





MILLWRIGHT DONE RIGHT

- Process Flow, Development and Design for all Systems.
- Troubleshooting and Systems Evaluations.
- Breakdown Repair and Maintenance.
- Design, Layout and Engineering.
- Procurement and Installation Services.
- Renovations and Expansion of Facilities.

Buffalo, MN | 763-244-3400
EDMillwrights.com

★ INDUSTRIAL CONSTRUCTION

| | |
|------------------|---------------------------------------|
| Category: | Over 20 Million |
| Company: | Fagen, Inc. |
| Award: | PYRAMID |
| Project: | Yellowstone Generating Station |

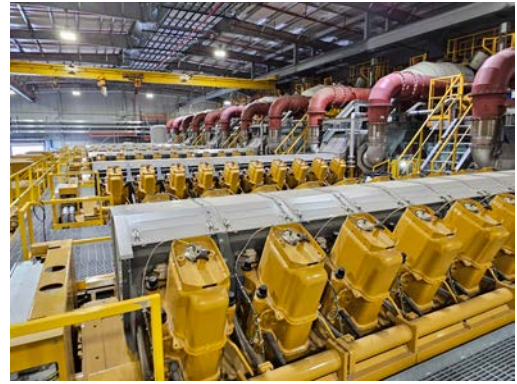
The Yellowstone Generating Station project near Laurel, MT, saw Fagen, Inc. step in as the primary contractor to complete construction of a 175 MW Reciprocating Internal Combustion Engine (RICE) power plant, commissioned by NorthWestern Energy. Fagen, Inc. took over the project at 70% completion, bringing it to final delivery on an ambitious eight-month timeline. Commissioned by NorthWestern Energy, the project spanned an area of 10 acres and was completed on June 2024. Fagen, Inc.'s portion of this project was \$30.8 million.

Fagen, Inc. provided comprehensive construction services, encompassing a wide range of facilities such as the engine hall, multiple support buildings, including an administration and water treatment building, and extensive above- and below-ground electrical infrastructures. The construction

also included a complex network of utility piping, sanitary sewer, fire water loop systems, and other necessary civil infrastructures.

Throughout the project, substantial infrastructure was installed, including over 281,000 linear feet of cable, 28,000 feet of conduit, 8,000 wire terminations, and 4,000 feet of aboveground piping. The project also included over 6,500 tons of asphalt for roadways, ensuring safe and accessible routes across the site.

In addition to project oversight and safety and quality control, Fagen, Inc. performed key services, partnering with five subcontractors for specialized tasks in electrical, mechanical, fencing, and civil works. Although Fagen, Inc. has a robust in-house capability for mechanical and electrical work, the client preferred local labor for these tasks, reinforcing the project's local community impact.



★ INDUSTRIAL CONSTRUCTION

| | |
|------------------|--------------------------|
| Category: | Over 20 Million |
| Company: | The Weitz Company |
| Award: | EAGLE |
| Project: | ADM Project Unity |

Archer Daniels Midland Company (ADM) is a global leader in both human and animal nutrition. ADM utilizes the power and provisions of nature to create ingredients and solutions that generate safe, healthy, and sustainable nutrition for people and animals around the world.

The Weitz Company (Weitz) designed, fabricated, and erected the ADM petfood premix manufacturing facility project code named "Unity", in Shawnee, Kansas. As the design/build general contractor, Weitz self-performed all the equipment installation, structural steel erection and millwright work. The Weitz project management team administered several other merit shop subcontractors—electrical, process mechanical, office and employee welfare area build-out, etc.

The over \$20 million, 10-month project consisted of utilizing a 275,000 square foot warehouse building to install and erect a complete food safe petfood premix blending and manufacturing facility. Weitz incorporated the design requirements to have the project meet the FDA's Food Safety Modernization Act (FSMA) standards.

The project finished with zero injuries, a zero-loss time safety status, exceeded all its profitability expectations, was completed within the allotted aggressive construction schedule, and had a very satisfied client. As an affirmation of success, in September 2024, Weitz was awarded a "Phase II" for this ADM project location.

Weitz used an integrated team approach in selecting ABC major subcontractors and equipment suppliers for the project.



Working with very familiar and seasoned partners not only made the project successful but made it enjoyable for all team members and created a sense of family. Weitz has repeatedly proven that the best prices and the best performance comes from subcontractors you know, with whom you have worked with before, and who have a desire for teamwork. Weitz invoked these subcontractors early in the project to do value engineering of the conceptual design. They supported Weitz as trusted partners, assisting Weitz as the sole sourced general contractor to ADM.



★ INDUSTRIAL CONSTRUCTION

| | |
|------------------|------------------------------------|
| Category: | 5–20 Million |
| Company: | Rice Companies |
| Award: | PYRAMID |
| Project: | Gordini Distribution Center |

The Gordini Distribution Center is a 120,000 SF building in North Mankato, Minnesota.

The construction highlights include the installation of pre-cast and metal walls, giving the boxed building a dynamic look through a cost-effective solution. Over 3,000 yards of concrete poured within a few days, including problem-solving for the pour in cold weather conditions and careful scheduling to enable 70 cement trucks a day to pour the concrete. It also included the installation a state-of-the-art sprinkler system to ensure employees' safety and meet the city's standards.

To maintain the highest standards of quality throughout the project, Rice Companies implemented a comprehensive quality control process that included daily reports, on-site project management, and regular coordination with subcontractors. The team's proactive approach to quality ensured that all work met the client's specifications and that any necessary revisions were promptly addressed. Close communication with the City and the client during both preconstruction and construction phases ensured that all parties were aligned, enabling the project to progress smoothly despite unforeseen challenges.

This project exemplifies a successful blend of diverse construction methods, strategic preconstruction planning with tax and municipal coordination, and a client-focused approach that facilitated Gordini's successful relocation of distribution operations. Despite numerous challenges and delays, Rice Companies delivered a state-of-the-art distribution center that enhances operational efficiency and supports local economic growth.



★ INDUSTRIAL CONSTRUCTION

| | |
|------------------|-------------------------------|
| Category: | 5–20 Million |
| Company: | EDM, LLC |
| Award: | PYRAMID |
| Project: | New Feed Mill Facility |

The project for Michael Foods, one of the leading manufacturers of egg products in the United States, consisted of a new feedmill at their Gaylord, MN location along with the demolition of two outdated feedmills, one at the Gaylord location and one at the LeSuer location. These two facilities had been providing feed for Michael Foods roughly 2 million chickens at their Minnesota farms. The new feedmill increased feed production by 60% and increased storage capacity by 300%.

Project Highlights:

- 24 Ingredient Bins providing 1,100 tons of ingredient storage
- 8 Loadout Bins providing 180 tons of finished storage feed
- 7,000 sq ft Warehouse with Dry Sprinkler Fire Protection
- 22,000-gallon Liquid Ingredient Storage
- 6 ton Mixer/4 minutes per batch
- Utilized existing Scale, 3 Grain Bins & other miscellaneous structures
- Corn grinding capacity up to 30 tons/hour with room for a 2nd machine
- Updated existing Corn Storage with 15,000 bushel/hour Corn Receiving
- Current feed production of 60-70 tons/hour with a max design up to 100 tons/hour

Michael Foods was clear from the start that they needed to continue full operations during all phases of the project. EDM is proud to say that we were able to complete demolition and construction while allowing Michael Foods to operate at full capacity during this project.

With the completion of the feedmill, Michael Foods achieved their goal of updating their automation processes, increasing their production and storage capacities and ensuring the highest level of safety standards are upheld throughout their new facility. The project was completed one month ahead of schedule despite a three month delay right out of the gate, a Bird Flu outbreak, and parts shortages. This was possible due to the excellent partnerships with our vendors and subcontractors, in addition to the hard work performed by our amazing EDM employees.



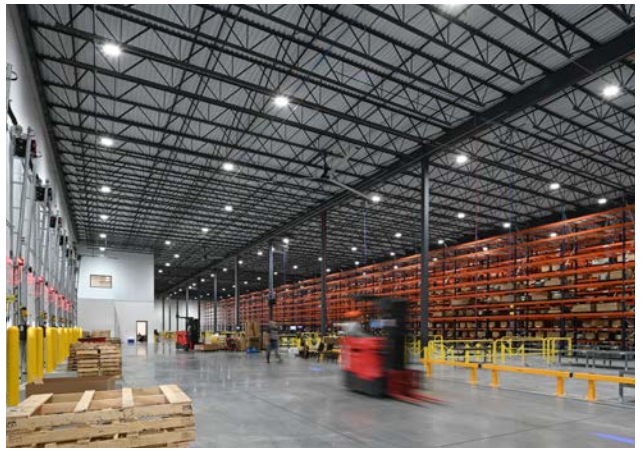
★ INDUSTRIAL CONSTRUCTION

| | |
|------------------|--|
| Category: | 5–20 Million |
| Company: | Nor-Son Construction |
| Award: | EAGLE |
| Project: | Clow Stamping Warehouse Expansion |

Clow Stamping is a metal stamping company, providing design, manufacturing, and shipping services to customers, including several Fortune 500 companies. Beginning as a family company in 1970, Clow Stamping has become an industry leader with over 500 full-time employees. The facility, in Merrifield, Minnesota, wanted a new 106,400 square foot finished goods warehouse, consisting of 25,600 square feet of cold storage space converted into heated manufacturing space, and construction of a 2,400 square foot enclosure to connect it to the existing building. The project began in May 2023 and was completed in April 2024.

Nor-Son worked with a geotechnical engineer to evaluate the complicated site conditions, which included a high-water table and wet soil. The site required approximately 50,000 cubic yards of imported fill and dewatering in some areas. Throughout the design and preconstruction process, Nor-Son collaborated with Clow Stamping and subcontractors to review design and material options to maximize the project while minimizing the budget and providing a long-term quality building.

With a high rack storage, close to 30 feet, and a robotic system planned for the new warehouse, floor flatness and levelness needed to be precise while also adhering to the budget. An above ground water tank was also required to adhere to fire protection protocol. Challenges were met with ingenuity and a do-whatever-it-takes attitude, resulting in a new warehouse that met the client's needs. The construction project proved Nor-Son's commitment to safety, resulting in zero safety violations or incidents. The building was finished on time and under budget.



★ INDUSTRIAL CONSTRUCTION

| | |
|------------------|---------------------------|
| Category: | 1-5 Million |
| Company: | Bauer Design Build |
| Award: | PYRAMID |
| Project: | IDC Spring |

Bauer Design Build partnered with IDC Spring to lead the remodel and expansion of their Corporate Headquarters in Coon Rapids, MN. IDC Spring, a family-owned business since 1974, manufactures garage door springs across three locations in the U.S., with Minnesota serving as its legacy site. The remodel was designed to unify office and manufacturing spaces, ensuring key functions were centrally accessible to all employees. An accessible outdoor space was also created as a prime amenity to support employee culture and enhance the work environment.

Our team took responsibility for project supervision, management, daily safety oversight, and site cleanup, making up roughly 15% of the total project labor. We tackled the challenge of a live renovation within an industrial manufacturing facility, balancing high-quality finish expectations with the need for minimal disruption to IDC's operations. Clear, consistent communication kept us closely aligned with IDC's goals, while an industrial-style approach to setting safety and project goals fostered collaboration and engagement with the client's manufacturing team.

Ultimately, the transformed headquarters now stands as a testament to IDC Spring's strong brand legacy and their close-knit employee culture. Through a commitment to safety, collaboration, and client goals, Bauer Design Build successfully delivered the project on time and on budget, meeting the client's vision for a unified, functional, and inspiring space.



★ COMMERCIAL CONSTRUCTION

| | |
|------------------|-----------------------|
| Category: | Over 5 Million |
| Company: | Rice Companies |
| Award: | PYRAMID |
| Project: | Fargo Office |

The Rice Office in Fargo, North Dakota, included the design-build of this 32,920 SF 2-story office and shop and an additional 23,000 SF fenced concrete yard for the storage of construction equipment and materials. Rice Companies built this space for its Fargo branch location, starting construction in September of 2023 and completing the project in July of 2024.

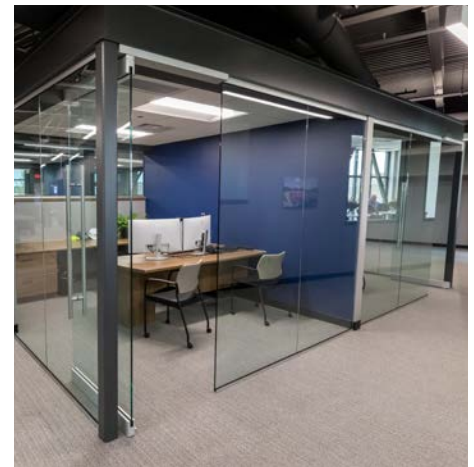
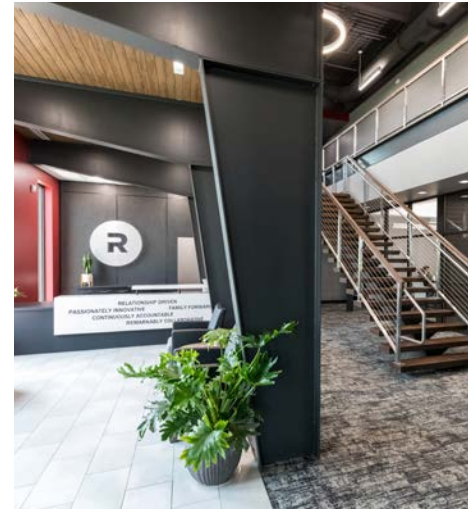
From the initial stages, the project involved significant collaboration between Rice Companies, project partners, and the City of Fargo to select a site that met both municipal requirements and the operational needs of the office and shop. This preconstruction phase laid the groundwork for a successful build, ensuring the project aligned with the city's vision while meeting the specific demands of the office and shop space.

With Rice Companies' in-house architectural design and engineering team at the forefront, the value analysis and engineering processes were deeply integrated into the project. The team's thorough planning and coordination with local building partners resulted

in an innovative design showcasing prominently functional steel elements within the building. The seamless integration of steel into the building's entrance, lobby, and workspaces not only enhances aesthetics but also underscores the project's structural integrity. Additionally, developing a concrete construction yard required extensive research and collaboration with the City to ensure the space met city and building needs.

Evolving design requirements during construction led to changes in scope and construction. Rice Companies worked closely with stakeholders to manage these changes without compromising the project timeline or quality.

The 2-story office and shop building brings to life the materiality of buildings and infrastructure, blending functionality with elevated design elements. This project exemplifies how Rice Companies approached the unique challenges of site development and construction with innovative solutions, quality craftsmanship, and a collaborative approach that meets both the city's and the building's needs.



★ COMMERCIAL CONSTRUCTION

| | |
|------------------|----------------------------------|
| Category: | Over 5 Million |
| Company: | Rice Companies |
| Award: | EAGLE |
| Project: | Corborn's Retail Facility |

The Coborn's Retail Complex project in Otsego, Minnesota, is a multi-building, multi-function space in the heart of the community. Rice Companies completed this project for a long-time, valued client, Coborn's, who entrusted Rice Companies to build this significant project.

The project included an array of building requirements, construction methods, and store specifications, with five different types of customer-facing stores completed. The construction involved the demolition and reconstruction of the grocery store and the addition of the Liquor Store along with an Erbert & Gerbert's restaurant and drive-thru. The addition allowed for the 8,000 SF expansion of the Liquor Store that now features custom, high-end finishes with a wine tasting room. The project also included an additional 14,000 SF retail building featuring two franchise stores, Ace Hardware, and Pet Supplies Plus. Both franchise stores required specific franchisee build-outs and features with the construction and use of franchisee products. The total project features over 24,000 SF of remodeled, added, and newly built spaces. months. With the Coborn's Grocery remodel and Liquor Store addition.

The entire project team meticulously planned the project and worked the plan to ensure on-time delivery of the project to the client within the required five-month period. Adding to the schedule challenge was the scope addition of the Erbert & Gerbert's restaurant and drive-thru.



★ INSTITUTIONAL CONSTRUCTION

| | |
|------------------|----------------------------------|
| Category: | Over 5 Million |
| Company: | Construction Engineers |
| Award: | EAGLE |
| Project: | Bakken Area Skills Center |



The Bakken Area Skills Center (BASC) is a Career & Technical Education Center in Watford City, ND. It provides hands-on classes and real-world experience for high school students and is also used for post-secondary training and education for in-demand skills of the region's employers.

This facility is state-of-the-art in design and mission. Their goal is to provide accessible education and training programs to continue building a sustainable workforce for the Bakken area. Over half of the area's high school seniors do not directly go to a 4-year college. This building and its resources 'home-grow' the next generation of workforce. The work-based learning courses offered are customized to meet the needs of area employers.

Spaces include building trade lab areas, welding and automation labs, an auto and diesel mechanics shop, CDL simulator training, maker-space classrooms, health career lab classrooms, and industry partners collaboration spaces.

This new construction facility is close to 40,000 SF and sits on 20 acres of donated land. It is situated next to Watford City High School and Fox Hills Elementary School, which were both projects built by Construction Engineers.

The BASC is a true partnership with the McKenzie County School District, member schools in the NW region of North Dakota, and regional businesses. The state of ND provided \$13M in grant funding with corporate sponsors and donations covering the remainder of the construction costs. The Bakken Area Skills Center opened on time for spring classes in January 2024, and the project stayed on budget.



★ INSTITUTIONAL CONSTRUCTION

| | |
|------------------|---|
| Category: | 1-5 Million |
| Company: | Wieser Brothers General Contractor, Inc. |
| Award: | EAGLE |
| Project: | Winona Volunteer Services |



Winona Volunteer Services had been operating out of three decades-old buildings in downtown Winona. The three buildings housed their various services, but were a source of confusion to people in need of services. There were over 20 doors to the buildings, leaky roof, and ageing interiors and exteriors. Servicing those in need proved to be a challenge not having the option to be housed in one main building and they turned to their building partner; Wieser Brothers General Contractor, Inc.

The new 20,965 square foot new Winona Volunteer Services building is a non-profit facility serving Southeast Minnesota. The building houses a food shelf, a kitchen for home delivered meals and nutrition information, loading dock, garage, storage rooms, offices, drop-off canopy and clothes shop. WVS services over 1,000 people per year and hopes to double that with the incredible new building.

The impressive Winona Volunteer Services Building was completed in an impressive 9-month timeframe within budget and no lost work days! The end-product was a state-of-the-art facility, which will better provide services with dignity to those in need for the next 50 years and beyond! Wieser Brothers was proud to be a partner on such a staple program and facility for the good of Winona, MN and surrounding areas.



★ INSTITUTIONAL CONSTRUCTION

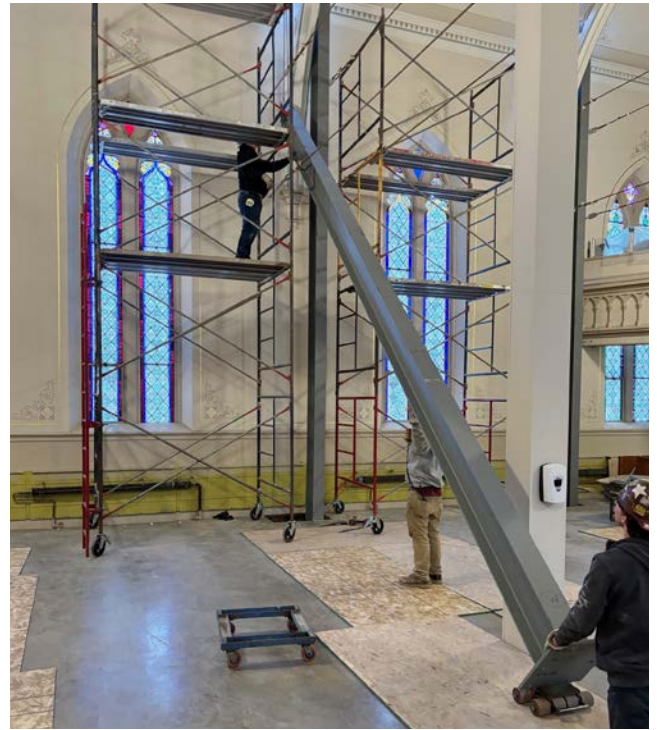
| | |
|------------------|---------------------------------|
| Category: | Less than 1 Million |
| Company: | The Joseph Company |
| Award: | EAGLE + Innovation Award |
| Project: | First Lutheran Church |

First Lutheran Church is a structure built 150 years ago in Decorah Iowa. Over time, the structure had debilitated to a point where the exterior load bearing walls had to be temporarily braced with steel plates and cables. In the Fall of 2024, The Joseph Company, along with structural engineers at Kueny Architects, were engaged to design and install new structural columns and roof trusses to permanently restore the structure while maintaining the architectural glory of this classic worship facility.

A remarkable challenge successfully managed by Joseph was to modify the new heavy steel truss system in the attic to mirror the existing wood truss frame which had sagged about 10 inches over the last century.

The project was completed on schedule during the 12 weeks between the end of Christmas holiday 2023 and beginning of Easter 2024 and was delivered under budget by about 9%.

Thanks in part to the successful conclusion of this job, Joseph was later engaged to lead a \$3-4 million dollar addition and remodel project for First Lutheran Church, tentatively scheduled for 2025.



★ INFRASTRUCTURE - HEAVY

| | |
|------------------|--|
| Category: | Over 5 Million |
| Company: | R.J. Zavoral & Sons, Inc. |
| Award: | PYRAMID |
| Project: | MN DOT Highway 59 Roundabout & Widening |

Highway 59 is a two-lane, arterial highway stretching from Canada to Mexico. It acts as a main corridor linking several communities in Northwest Minnesota. Off the intersection of Pennington County Road 3 is the Seven Clans Casino. Due to its proximity to the intersection, the casino generates a lot of traffic, which creates flow issues and corresponding driving hazards that come with such traffic flow problems.

The intersection has unfortunately seen multiple accidents over the last decade, including three fatalities in one year within one mile of the intersection. The Minnesota Department of Transportation (MnDOT) recognized this as a public safety concern and added the intersection to its list of slated improvements.

The public safety need identified by the MnDOT led to final planning, permitting, and bidding on the construction of the Highway 59 roundabout, as well as the other improvements needed. The project was scheduled to begin in May 2023 with a target completion of August 2023. To ensure the various components of the project were prioritized and addressed in an orderly manner, the project was divided into three phases. Phase One started the project by constructing the temporary bypass needed during later phases of the project, as well as replacing the culverts and widening six miles of Highway 59. The project was designed to complete the 6 miles of shoulder widening under traffic during the construction of Phase Two. From previous project experience, the RJZ team identified that completing shoulder widening under traffic can be dangerous to the public and our people. We requested, and were approved to complete the shoulder widening during Phase One detour. This meant we needed to double our forces in order to complete all the planned and additional work within the Phase One time constraints. With the detour built and the road widened, Phase Two started construction on the roundabout, focusing on the North, South, and West approaches. Finally, Phase Three finished the roundabout construction from the East approach and concluded with the removal of the created bypass.

We are honored to have been a part of making Minnesota roadways safer, and thankful for being given the opportunity.



★ INFRASTRUCTURE - HEAVY

| | |
|------------------|---|
| Category: | Over 5 Million |
| Company: | Elcor Construction, Inc. |
| Award: | EAGLE |
| Project: | North Broadway Avenue Reconstruction |

The North Broadway Avenue Reconstruction Project, spanning from Civic Center Drive to 13th Street North, is a transformative milestone for Rochester, Minnesota. This ambitious initiative revitalized a key corridor, creating a modern, multi-modal gateway connecting downtown Rochester to the Destination Medical Center (DMC) Development District. The project addressed aging infrastructure, improved safety, and enhanced mobility for all users.

Key achievements included replacing over 80-year-old water mains, storm sewers, and sanitary sewers—totaling 28,698 linear feet. The work also involved full roadway reconstruction, including adjacent streets and North-South alleys, all while maintaining continuous access to businesses. Safety improvements featured medians, modified driveway access, off-street bicycle facilities, and upgraded pedestrian walkways. Additionally, aesthetic enhancements transformed the corridor into a welcoming and functional space for

residents and visitors.

Despite the complexities of navigating existing utilities and ensuring business access, the \$18 million project was completed within a two-year timeline. Elcor Construction self-performed 57.4% of the work, showcasing technical expertise and a commitment to quality.

Broadway Avenue remains one of Rochester's most vital thoroughfares, serving as a key route to the world-renowned Mayo Clinic. With thousands of pedestrians traveling the corridor daily, these improvements were crucial to supporting Rochester's growth as a global hub for medical innovation and tourism.

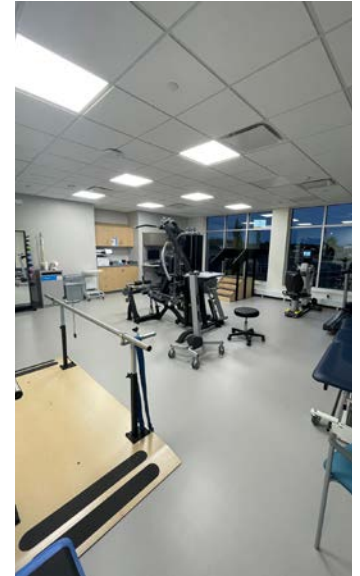
The North Broadway Avenue Reconstruction Project is more than an infrastructure upgrade—it's an investment in Rochester's future. By enhancing connectivity, safety, and accessibility, the project reinforces the city's identity as a thriving and forward-thinking community.



★ HEALTHCARE

| | |
|------------------|--------------------------------|
| Category: | 5–20 Million |
| Company: | Hy-Tec Construction |
| Award: | Honorable Mention |
| Project: | Essentia Staples Clinic |

Essentia Health St. Joseph saw a need in the Staples, MN area for a Clinic and Pharmacy that would be an all-inclusive facility for patients. With offerings from Physical Therapy to Chemotherapy Infusion, Essentia Health St. Joseph has successfully fulfilled the need to be a one stop shop clinic and pharmacy service in Staples and the surrounding area. After careful planning and a few roadblocks along the way, the location of the Clinic and Pharmacy was selected on the west side of Staples, MN with a clear view from the main State Highway # 10 and access from all sides of the facility. Starting operation in late July 2024, the facility has been seeing a steady stream of new and existing patients come through the door to utilize the facility.



NORTH RISK PARTNERS®

FACE RISK HEAD ON

**INSURANCE SOLUTIONS FOR
BUILDERS & CONTRACTORS**

**COMMERCIAL INSURANCE • SURETY
EMPLOYEE BENEFITS**

NORTHRISKPARTNERS.COM



★ HEALTHCARE

| | |
|------------------|------------------------------|
| Category: | 5–20 Million |
| Company: | Enclave Construction |
| Award: | PYRAMID |
| Project: | Vance Thompson Vision |

Vance Thompson Vision's new 40,085-square-foot facility in West Fargo, ND, showcases the region's most advanced ophthalmology treatments. The state-of-the-art center boasts 32 exam rooms, a dedicated clinical research space, and multiple procedural suites with cutting-edge laser technology. Designed in collaboration with HGA Architects, the sleek exterior maximizes natural light, creating a welcoming atmosphere for patients and staff. Notable features include switchable glass technology for patient privacy and educational opportunities, as well as a curved exterior facade with custom linear lighting and color-changing options.

Built adjacent to an operational ambulatory surgery center, the construction of Vance Thompson Vision required detailed safety protocols to ensure uninterrupted operations to the connected facility. Despite challenges such as construction over two winters and an ice storm impacting power companies across the state, the team's commitment and innovation ensured efficient and safe progress.

The result is a facility that fulfills the ambitious goals of Vance Thompson Vision and sets a new benchmark in ophthalmology excellence, elevating the standard of care for its patients.



★ HEALTHCARE

| | |
|------------------|--|
| Category: | 5–20 Million |
| Company: | Nor-Son Construction |
| Award: | EAGLE |
| Project: | Minnesota Adult & Teen Challenge - Alexandria |

Minnesota Adult & Teen Challenge (MnTC) is a residential drug and alcohol treatment and recovery program designed to help people break free from chemical addiction. When MnTC decided to open a men’s treatment facility in Alexandria, they began by looking at properties to renovate. When they received a call from a family who wanted to donate land, they did not hesitate to hire Nor-Son Construction for their new building.

All funding was raised by MnTC prior to construction. Large portions of the labor and material were donated to offset the overall project cost. Nor-Son collaborated with the many generous donors and vendors to keep the project moving forward, despite various delays in material and scheduling setbacks.

The building design was an all-wood framed structure of 60,399 square feet, which is unconventional for a building that large. MnTC wanted vaulted ceilings to create a spacious feeling for the people who would be living there during treatment programs. The configuration of the building was complicated, with an intricate truss layout and unique angles. Design complications required ingenuity and collaboration with the design team.

Due to delays in the truss system, the Nor-Son team separated the building into three parts to allow work to continue while other spaces remained exposed to the elements. The crew worked hard to erect temporary walls and prevent weather damage to areas where work was being done.

The Project broke ground just before winter of 2022 and was completed in September of 2024. During this almost 24 month project, Nor-Son had zero accidents or safety violations on site. While there were many challenges, the Nor-Son team overcame them all and delivered a beautiful, state-of-the-art facility for MnTC, helping individuals struggling with addiction for years to come.



★ PRE-ENGINEERED BUILDINGS

| | |
|------------------|----------------------------------|
| Category: | Over 5 Million |
| Company: | Rice Companies |
| Award: | PYRAMID |
| Project: | Victory Drive Development |

The Victory Drive Development project is a 40,000 SF pre-engineered metal building (PEMB) with pre-cast walls. Rice Companies' scope consisted of everything from the site work to the final finishes. The project began in December of 2022 and was completed by May of 2023.

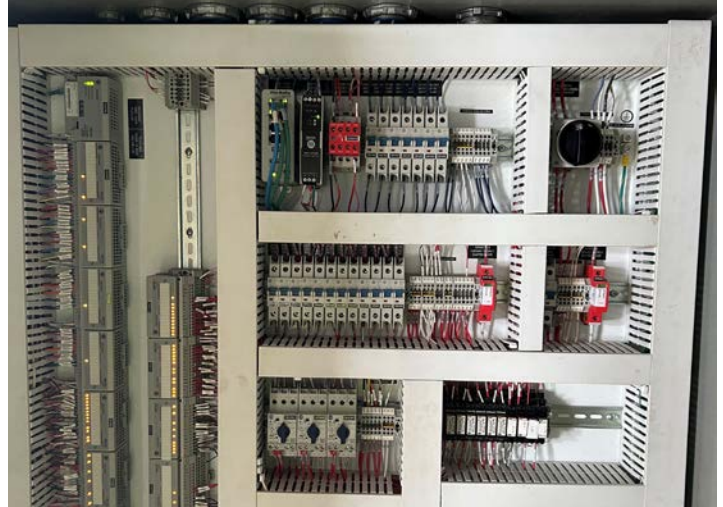
Home to Rice Companies' Mankato office, along with tenant retail, office, and warehouse spaces, the complex is a unique hybrid development that caters to diverse business needs. This project not only meets the operational needs of Rice Companies but also provides flexible, high-quality spaces for local businesses, enhancing the commercial landscape of Mankato.

Maintaining rigorous quality control was essential to the success of Victory Drive Development. Rice Companies employed daily reports and on-site project management to ensure all construction activities met the highest standards. Utilizing ProCore, the team managed the latest drawings, specifications, and revisions in real time, allowing them to adapt quickly to the evolving needs of the project, especially as tenant spaces were leased. Coordination with the City of Mankato was also critical as the team navigated easement requirements, landscaping standards, and other city-specific regulations. This proactive approach ensured the project not only met but exceeded quality expectations.



★ ELECTRICAL - INDUSTRIAL

| | |
|------------------|-----------------------|
| Category: | Over 1 Million |
| Company: | Knobelsdorff |
| Award: | EAGLE |
| Project: | Hubbard Feeds |



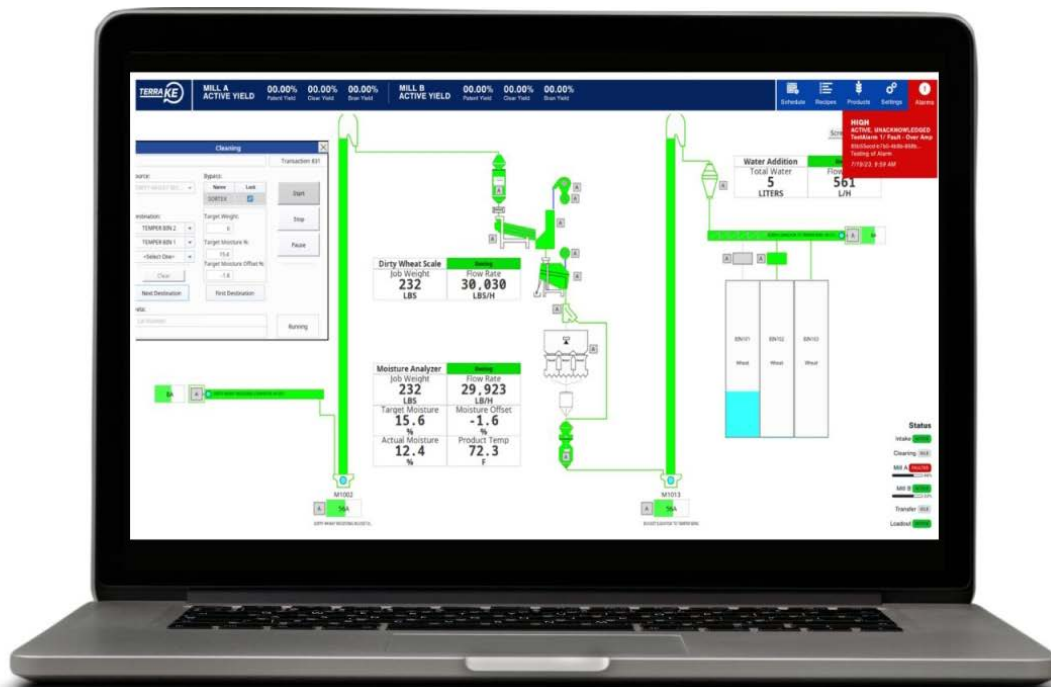
This complex brownfield project involved the modernization of a decades-old facility that required technical precision and innovative problem-solving.

Our team engineered and installed a new service entrance switchgear, built a new 24'x24' electrical room, and implemented a hazard monitoring system that meets NFPA 61 requirements. One of the key aspects of the project was the integration of our proprietary TerraKE automation system, transforming the plant from manual operations to a fully automated facility. This upgrade improved efficiency, enhanced quality control, and minimized downtime, significantly improving operational outcomes for Hubbard Feeds.

Despite the challenges posed by working in an operational facility with outdated infrastructure, we maintained our commitment to minimizing disruptions to Hubbard Feeds' ongoing operations. We phased the project to accommodate their needs and implemented value engineering strategies, such as utilizing a vacant alley for electrical upgrades, which reduced costs and downtime.

Our efforts culminated in a highly coordinated nine-day shutdown, during which we successfully transitioned the plant to the new system, demolishing and removing the old infrastructure. Hubbard Feeds reported a significant return on investment, with a projected payback period of under six years.

This award-winning project exemplifies Knobelsdorff's ability to deliver high-quality, innovative solutions in challenging environments, showcasing our expertise in engineering, construction, and automation. We are proud to have partnered with Hubbard Feeds to ensure the long-term efficiency, safety, and success of their operations.



★ ELECTRICAL - COMMERCIAL

| | |
|------------------|---|
| Category: | Over 1 Million |
| Company: | Electrical Production Services, Inc. |
| Award: | PYRAMID |
| Project: | Waconia Fire Station |



In August of 2021, the City of Waconia approved a new site and building for the Waconia Fire Station. The new fire station was designed to improve productivity when it came to responding to fire and medical emergencies. Kraus Anderson was selected as the General Contractor for the project and Electrical Production Services was chosen as the electrical contractor for this project. Once EPS was notified by Kraus Anderson that they had been selected to perform the electrical low-voltage applications for this project, throughout 2023, EPS spent many hours pre-planning and laying out the project utilizing the exceptional skills of the EPS Electrical Division project managers. The Electrical Division focused on the underground and electrical installation while the Technology Systems Division developed a plan for the installation of security and door access within the new fire station.

EPS Project Manager Adam Peterson assembled a team of skilled EPS electricians and technicians to begin work on the project in the Spring of 2023. The EPS Team was led by Lead Journeyman Travis Kaiser, who led the cohesive team consisting of Electrical Apprentices Alexander Farabee and Ben Hammers. EPS Field Supervisor Phil DeVlaeminck also completed many hours on the project and assisted the assigned Electrical Team in many ways throughout the project. EPS completed 5,698 total man-hours on the new fire station that was completed in June of 2024.

The EPS Team did an outstanding job with the project management, electrical installation, and low-voltage installation as the project was completed on time and within the approved budget. The new Waconia Fire Station consists of six apparatus bays, command parking areas and includes twelve different types of housing and storage for the firefighting equipment and vehicles. EPS is immensely proud of the exceptional quality work completed on this important community project for Waconia.



★ ELECTRICAL - COMMERCIAL

| | |
|------------------|---|
| Category: | 500,000–1 Million |
| Company: | Willmar Electric |
| Award: | PYRAMID |
| Project: | Upper Sioux Community Tribal Safety Center |



The Upper Sioux Community, also known as the Pezihutazizi Oyate, has been working since the late 1990's to exercise their rights as a sovereign nation to help their community to become more financially secure and stable. With the continued growth and development they have experienced, there has been substantial growth in employment opportunities and Tribal services.

In recent years, as the growth began to progress, the Upper Sioux Community desired to have their Tribal Safety components under one roof and not rent space from the local police station, EMS facility and court house. The Upper Sioux Community embarked on a mission to build the Upper Sioux Community Tribal Safety Center to house three components – Medical Triage, Police Station and Tribal Court.

Willmar Electric partnered with Miller Architects to design and install the electrical for the new Upper Sioux Community Tribal Center. The new facility is situated in Granite Falls, MN on the banks for the Minnesota River in the heart of the Upper Sioux Community.

Willmar Electric embraced the opportunity to understand and become culturally sensitive to the needs and requests of the Owner, accepted the challenges of implementing major project additions, as well as implemented advanced technology, while upholding Willmar Electric's quality standards, along with not compromising the safety of co-workers or other tradesmen. In August 2024, the Upper Sioux Community proudly took occupancy of the Tribal Safety Center, which will help them to "continue to enhance and strengthen our culture and traditions; and find ways to preserve our dignity, free from the burden of meeting basic survival needs; and establish stability for future generations of the Pezihutazizi Oyate." (History of the Upper Sioux Community website)



★ OTHER CONSTRUCTION

| | |
|------------------|--|
| Category: | 1-5 Million |
| Company: | Wanzek Construction, Inc., a MasTec Company |
| Award: | PYRAMID |
| Project: | El Sauz Transformer Exchange |

Wanzek Construction, a MasTec Company, showcased its expertise in renewable energy infrastructure with the successful completion of the El Sauz Transformer Exchange Project in Willacy County, Texas. This complex wind turbine transformer replacement initiative involved the seamless coordination of multiple stakeholders, including the client Nordex, the equipment manufacturer and a dedicated on-site team.

Facing a critical 50-day delay due to severe weather and owner related causes, Wanzek's skilled team implemented an innovative 24-hour work schedule, operating two 12-hour shifts to maximize productivity during favorable weather windows. This round-the-clock operation required precise coordination between day and night crews, ensuring seamless communication and continuous progress. The team leveraged advanced planning and scheduling software to optimize resource allocation, particularly in coordinating multiple crane crews for simultaneous operations.

Despite the compressed timeline, Wanzek maintained rigorous quality control standards and successfully integrated their operations with the active El Sauz Ranch activities without disruption. The project's highlights include the replacement of 33 defective wind turbine transformers, the implementation of advanced technologies, and the seamless coordination of complex logistics, including the transportation of the transformers to and from the repair facility in Ohio.

The project encountered significant challenges with the arrival of Tropical Storm Harold and crane operational issues. Just one week before mobilization, the initially contracted crane provider withdrew, despite a fully signed and executed agreement.



Nevertheless, the team's exceptional problem-solving skills and adaptability ensured the successful, on-schedule completion of this complex 14-week project. Through careful planning and execution, Wanzek maintained zero lost-time incidents throughout the project duration while achieving all quality control benchmarks.

The successful completion of this wind energy project demonstrates Wanzek's commitment to delivering innovative solutions and driving the transition to a sustainable energy future, showcasing their ability to overcome significant challenges while maintaining the highest standards of safety and quality.



★ OTHER CONSTRUCTION

| | |
|------------------|---|
| Category: | Over 5 Million |
| Company: | Greystone Construction |
| Award: | EAGLE + President's Award |
| Project: | Canterbury Park Horse Barn Redevelopment & Backside Improvements |

The Canterbury Park Barn Redevelopment & Backside Improvements project marks a pivotal investment in Minnesota's horse racing industry, reflecting Canterbury Park's commitment to enhancing the equine community while celebrating 30 years of live racing. Partnering with Greystone Construction, Canterbury Park replaced outdated 1980s horse barns with three state-of-the-art 103-stall fabric barns, modern trainer restroom and laundry facilities, a new stable gate entrance, and improved bituminous roadways. These upgrades improve functionality, comfort, and aesthetics, ensuring a positive experience for the nearly 1,000 horsepersons and 1,100 racehorses that call the property home each summer.

The project highlighted Greystone's Fabric Building and Facility Solutions divisions, whose expertise in Britespan Building Systems' fabric structures and meticulous planning delivered outstanding results. Collaboration with ISG, Bolton & Menk, and the City of Shakopee was instrumental in navigating challenges such as stormwater management compliance, utility transitions, and complex phasing. The team overcame a critical MnDOLI storm sewer surcharge interpretation, engineering a creative solution that included using a basin for irrigation while maintaining functionality.

Construction was expertly timed to minimize disruption during the live racing season, with horses on-site. High levels of communication and strategic planning ensured smooth coordination across adjacent projects and stakeholders. Greystone delivered the project safely and efficiently, with no incidents involving horses, horsepersons, or workers.

This transformative redevelopment enhances Canterbury Park's facilities and strengthens its position as a leading venue in the nation's horse racing industry, setting the stage for continued growth and future phases of improvement.



★ RENOVATION

| | |
|------------------|------------------------------------|
| Category: | 1–5 Million |
| Company: | Stevens Construction Corp. |
| Award: | PYRAMID |
| Project: | Meadowood Shores Renovation |

Meadowood Shores in New Brighton, MN is a senior living community for active seniors 62 years old and older. The bustling 24-year-old, four-story senior living community had several underutilized, dark, and outdated community spaces requiring a refresh to improve the wellness and lifestyle amenities for the community's residents.

The owner E.J. Plesko & Associates, and management company Silvercrest Properties, enlisted Stevens Construction Corp. to serve as the general contractor for the two-phase endeavor. This 3,199-square-foot communal area renovation included the demolition of a three-season porch, a 600-square-foot addition and multiple updates across the dining room, kitchen, fitness room and first-floor community room.

The primary goal of the project was to enhance the functionality and resident experience without disrupting the lives of the residents inhabiting the community. Our approach addressed various critical challenges, resulting in significant improvements in both aesthetics and operational efficiency—with a minimized impact to the residents.



★ RENOVATION

| | |
|------------------|-----------------------------------|
| Category: | 1-5 Million |
| Company: | WEB Construction Co., Inc. |
| Award: | EAGLE |
| Project: | Arch + Cable |

WEB Construction successfully completed the Arch + Cable project in downtown Mankato, MN, transforming 12,485 square feet of space from unused office space to a bespoke hotel between April and November 2023. This renovation converted the 4th floor's gray shell into 20 modern hotel rooms and repurposed the 1st-floor space into a stylish check-in and concierge area.

Navigating the complexities of a mixed-use building presented unique challenges, including integrating 20 new bathrooms within the 4th floor of a 5-story building while minimizing disruptions to offices and residential tenants. The building is owned by a competitor who also occupies office space there, making the fostering of and maintaining positive work relationships throughout the building especially significant. Our strategic planning and execution ensured minimal impact on existing tenants. We utilized CPM software for resource allocation and detailed scheduling and implemented proactive measures such as dust barriers and noise control strategies. Plumbing work was scheduled post-tax season to avoid

disruptions for the accounting firm below. Our team optimized the budget through value engineering, proposing alternative shower floor materials and cost-effective plumbing fixtures, which reduced costs without sacrificing quality. Notably, strategic scheduling created a 15% cost saving on materials with better results and recommended alternative fixtures saved 10% on electrical costs.

The 4th-floor hotel rooms feature advanced sound insulation, upgraded electrical systems with smart controls, and modern plumbing for contemporary comfort. The 1st-floor lobby was transformed into a functional and welcoming space with ADA compliance, enhanced security systems, and a business center.

The Arch + Cable project revitalized underutilized office space and contributed to the downtown Mankato area by creating a boutique hotel. This project highlights WEB Construction's ability to manage complex renovations while ensuring tenant satisfaction and supporting the local economy.



★ PUBLIC WORKS/ENVIRONMENTAL

NATIONAL
EIC PYRAMID
AWARD
WINNER

| | |
|------------------|---|
| Category: | Over 5 Million |
| Company: | John T. Jones Construction Co. |
| Award: | EAGLE |
| Project: | City of South Sioux City, NE Wastewater Treatment Facility |

John T. Jones Construction, in conjunction with HDR Engineering, built the City of South Sioux City, NE a new Wastewater Treatment Facility that has been a pioneer for new wastewater treatment technology in Nebraska. The project featured the state's very first Aerobic Granular Sludge treatment system, reducing the construction footprint by eliminating the need for large treatment clarifiers. The project required heavy concrete (approximately 8,700 cubic yards), precast erection, equipment and pipe installation, and a variety of other trades. There were several challenges we faced throughout the project including COVID-induced equipment delays, price escalations, new and complex technology, and harsh weather. Through detailed planning and clear communication, John T. Jones was able to mitigate these challenges and provide South Sioux City a plant capable of treating over 2 millions gallons of water per day. This new plant grants the city the ability to treat their own water independently, rather than relying on their neighboring cities. John T. Jones would like to thank the City of South Sioux City, NE and also HDR Engineering for assuring the successful completion of this project.



★ RESIDENTIAL - MULTI-FAMILY

| | |
|------------------|-----------------------------------|
| Category: | Over 25 Million |
| Company: | Stevens Construction Corp. |
| Award: | HONORABLE MENTION |
| Project: | Lilia |

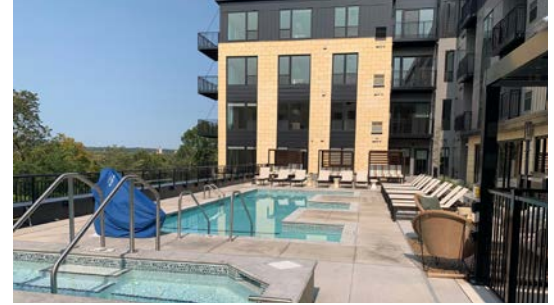
In Lilydale, MN, off the Sibley Memorial Highway and along a deep bluff overlooking the Mississippi River, resides the Lilia. This stunning, 126-unit luxury apartment building has breathtaking views; and its rich interiors brilliantly embrace and reflect the beauty of its surroundings.

The Lilia is a 228,945-square foot building constructed on 2.5 levels of post tension concrete, with four stories of self-performed wood frame on top. It was skillfully constructed between the highway and a high bluff, providing direct road access to the building's 183 stall parking garage as well as picturesque views of the Twin Cities, tree-lined bluffs and the Mississippi River.

The one-, two- and three-bedroom units offer high-quality appliances and finishes, floor-to-ceiling tinted windows for UV protection, and stunning balcony views. Corner apartments are

upgraded units with higher ceilings, enhanced fixtures and elevated appliances with Bluetooth connections. Lilia's exterior is stately with a brick veneer, masonry stone and metal clad panel façade and a ballasted flat roof with solar panels covering 87% of the roof.

The building is supported by a 0.5-mile precast concrete retaining wall, with a dog run neatly positioned between the retaining wall and first-floor pet spa. Other outdoor amenities include two second-level courtyards; one courtyard is a Zen deck with 12 large cement planters, a grilling station and outdoor pizza oven that include a snowmelt system to access the grill/oven station year-round. The other courtyard features an E-shaped pool, hot tub and grilling station. Indoor amenities include a private kitchen and dining room, parlor room, tearoom, large fitness center, cedar sauna, golf simulator and clubroom.



As Responsive as You Need Your Labor and Employment Law Firm to Be.

With over 50 years' of combined experience assisting employers with:

- Labor Relations
- Negotiations
- Fringe Fund Audits
- Mechanic's Lien Disputes and Collections
- Employee Handbook packages (\$975)
- Employment Litigation
- Employment Law Advising
- State Agency Investigations
- Affirmative Action Plans
- Drug & Alcohol Testing Package (\$475)

Gregory L. Peters
Direct: 952-921-4607
gpeters@pklaborlaw.com

Martin D. Kappenman
Direct: 952-921-4603
mkappenman@pklaborlaw.com

P&K | **Peters**
Kappenman

The Lawyers for Employers

REPRESENTING EMPLOYERS IS WHAT WE DO. WWW.PKLABORLAW.COM

★ RESIDENTIAL - MULTI-FAMILY

| | |
|------------------|-----------------------------------|
| Category: | Over 25 Million |
| Company: | Stevens Construction Corp. |
| Award: | PYRAMID |
| Project: | Minnetonka Station |

The Minnetonka Station is a 317,017-square foot amenity-rich apartment building positioned in the revitalized Opus Park neighborhood. It conspicuously rests amidst several one-level office buildings and surface parking lots.

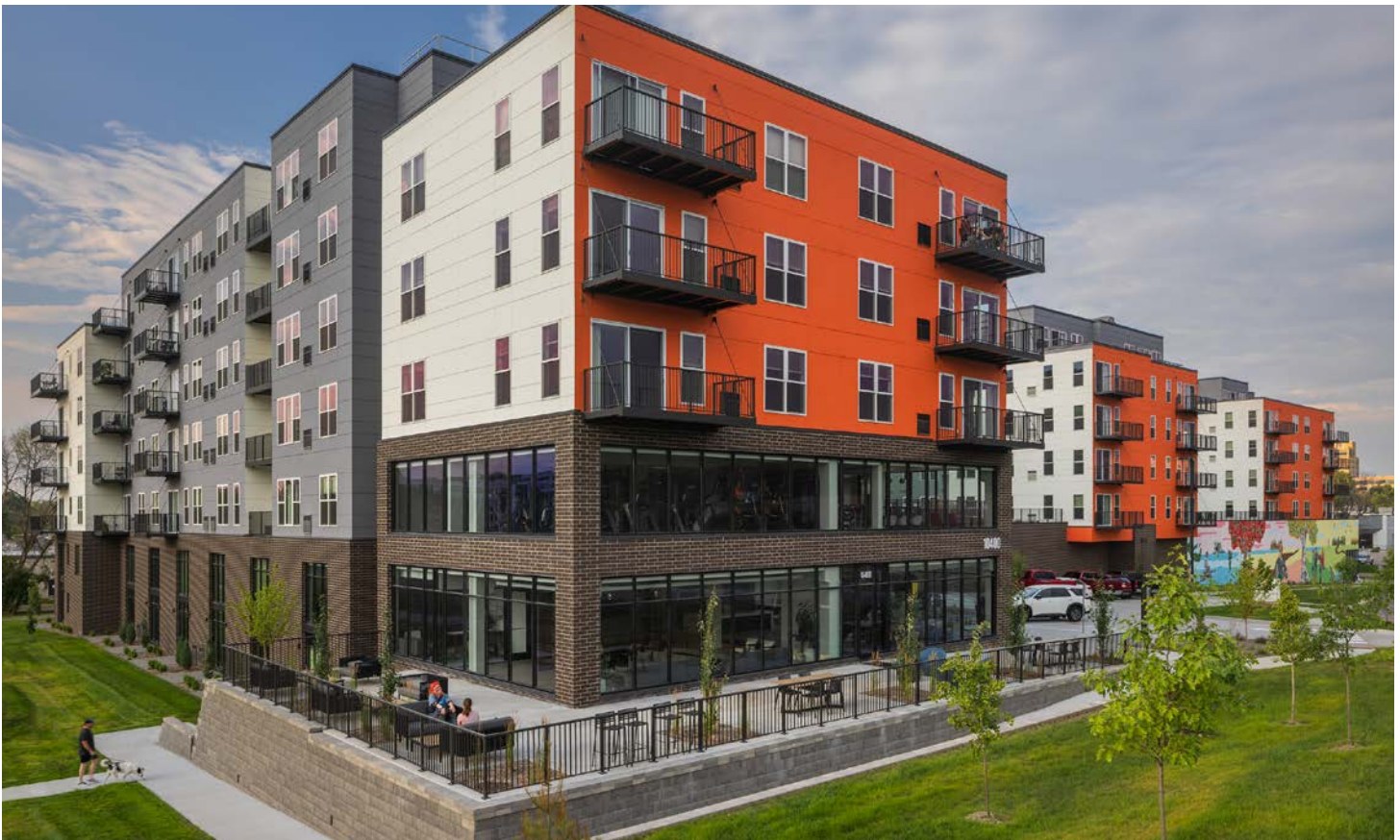
Minnetonka Station proudly boasts sections of beautiful, bright orange fiber cement siding that extend out from the rest of the building to confidently call out to passersby. It is a bold gem that embraces the surrounding office park community, while adding its own unique flavor with an artist wall decorating the concrete block exterior.

The apartments are constructed of two-levels of precast concrete and five wood frame stories. It houses 275 studio-, one-, two- and three-bedroom units, including townhomes and 28 units designated as affordable housing.

The Minnetonka Station is strategically located near the Southwest Light Rail station and provides direct access to the Yellow Trail Scenic Loop for biking and walking. The apartment building is in an intentionally transit-forward location to provide residents with alternative access to downtown Minneapolis and the surrounding areas.

The E-shaped structure of the building features three wings that create two, second-level courtyards. The courtyards include an outdoor pool, lounging and dining areas, grilling stations and more. The building's other amenities include a club room with a fireplace and kitchen, game room, and remote work offices. Each unit features large windows, quartz countertops, wood-style plank floors and balconies for elegance and durability.

The Minnetonka Station also embraces sustainability with a backbone infrastructure for future solar panels, energy-efficient windows, and electric vehicle (EV) chargers. The intentional landscaping integrates native vegetation with the nearby tree-filled area.



★ RESIDENTIAL - MULTI-FAMILY

| | |
|------------------|-----------------------------|
| Category: | 10-25 Million |
| Company: | Enclave Construction |
| Award: | EAGLE |
| Project: | Lynvue Apartments |

Lynvue exemplifies the success of Enclave’s unified approach, from the early development stages long before breaking ground through thoughtful design and precise construction to a seamless hand-off to property management.

This nearly 237,000-square-foot community in Richfield features 161 units spanning five stories. A welcome addition to the city, Lynvue sits on the corner of Lyndale Avenue and 65th Street, which underwent significant reconstruction in tandem with the project construction schedule.

Lynvue’s design is thoughtful and meticulously researched, honoring community staples like Bachman’s Floral and the Frenchman’s Pub. These elements enrich the building’s character and bring a sense of neighborhood charm, creating a warm, inviting atmosphere. The Bachman family, local florists since 1885, is celebrated throughout the design, with lush green accents and a homegrown feel. The legacy of the Frenchman’s Pub is echoed in spaces like the lobby, the Pub & Parlor community room, and Henry’s Workshop, a private fifth-floor amenity.

A building packed with shareable spaces, this lifestyle driven community offers multiple grill stations, outdoor patios, bike storage, underground parking, a mini market and more. Combined with its convenient location only 10 minutes from Minneapolis, Lynvue is an all-inclusive place to call home.

Lynvue required innovative thinking and meticulous collaboration, and the project team confidently overcame challenges to deliver a one-of-a-kind project.



★ RESIDENTIAL - MULTI-FAMILY

| | |
|------------------|--|
| Category: | 5-10 Million |
| Company: | Lyon Contracting, Inc. |
| Award: | EAGLE |
| Project: | The Plaza at Hazeltine Apartments |

The Plaza at Hazeltine Apartments located in the heart of Chaska is a new, wood framed, 4-Level, 176,266 square foot apartment building over an underground parking garage. Hazeltine Apartments has a strong sense of community and genuine connections with its neighbors. The Plaza at Hazeltine's prime location makes the most of pedestrian pathways, retail, recreation, and entertainment hotspots, ensuring you'll experience the true essence of a welcoming, walkable neighborhood. And best of all the Loop at Chaska executive course and the renowned Hazeltine National Golf Club are right outside your door and viewed through your window!

When The Plaza at Hazeltine broke ground May 2023 the project had many unique challenges including turning a pre-developed retail site into a functional multi-family site along with the complexity of having a two-story drive lane through the center of the building to satisfy the requirements of the existing retail within the development. We not only were able to complete the project on time, but ahead of schedule. Residents were able to move in a month early.

From the unique process of transforming a predeveloped retail space and underground utilities into a functional multifamily site to navigating the complexity of a drive lane running through the center of the building with underground parking below, this project presented significant challenges. However, delivering it under budget, ahead of schedule, and with the highest level of quality made the experience incredibly rewarding.



★ RESIDENTIAL - MULTI-FAMILY

| | |
|------------------|--------------------------|
| Category: | 5-10 Million |
| Company: | Brennan Companies |
| Award: | PYRAMID |
| Project: | Silos Apartments |

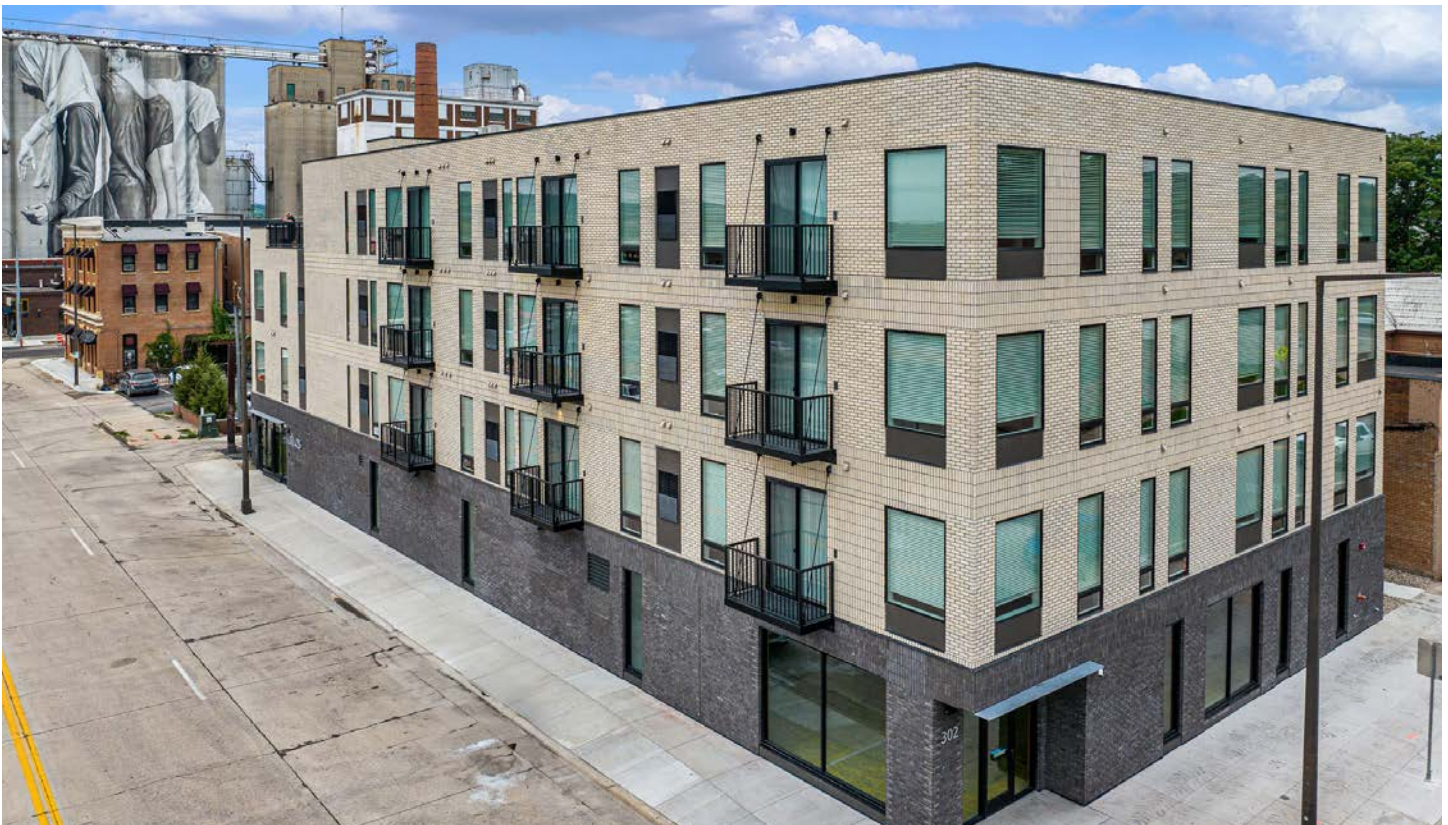
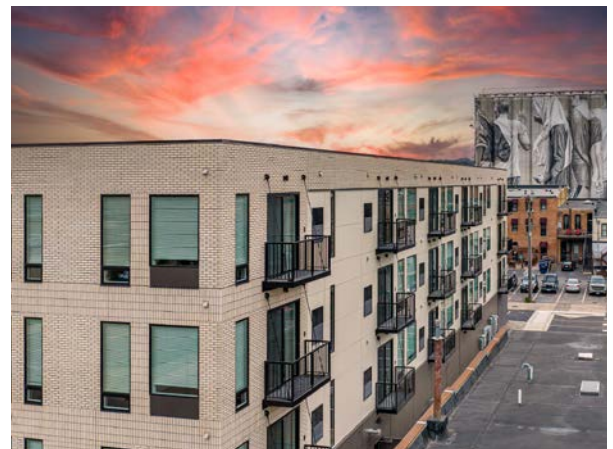
Brennan Companies is thrilled to celebrate the completion of Silos Apartments! From transforming a run-down building turned vacant lot into a modern and attractive residential space, Silos addresses the pressing need in Mankato for quality housing and provides a welcoming home for it's community.

This luxury apartment features covered parking, in unit washer and dryer, balconies for each unit, high ceilings, and a communal roof top patio to take in the sights and sounds of the city. The main floor also is home to 1,200 square feet of commercial space and electric vehicle charging stations.

The project received strong support from local residents, city officials, and community leaders, reflecting the shared understanding of Mankato's need for diverse housing options. Senior Project Manager Brian Barnett and Superintendent Kelly Sandborg brought their extensive multifamily experience and dedication to each detail of Silos. The duo's shared focus on quality and collaboration helped bring Silos to life as a space built for lasting memories.

Thank you to our wonderful trade partners for showing up ready each day in order to complete this project in 9 months beginning in the dead of winter. Your craftsmanship and dedication is evident. Thank you to the design team for pursuing growth and change, while meeting the needs of the town and blending with the aesthetic of the neighborhood. The functionality of the space and connection to the community shines through the design.

We are proud to add Silos to Mankato's growing landscape, offering residents a new place to live, grow, and thrive. Thank you to everyone involved in making this vision a reality.



★ SPECIALTY CONTRACTING - INTERIORS

| | |
|------------------|--|
| Category: | Over 1 Million |
| Company: | Grazzini Brothers & Company |
| Award: | EAGLE |
| Project: | Denver Airport - Great Hall |

The Denver International Airport—Phase 2 of the Great Hall built the first of two new state-of-the-art TSA security checkpoints on Level 6, widened the balcony approximately 40 feet, and built a new triple escalator that takes screened passengers from Level 6 to Level 4, where they can take the train to the gates.

Grazzini Brothers & Company's scope of work entailed the installation of over 75,000 square feet of large format quartz tile. Work was completed on both Ticketing Level 6 and Baggage Claim Level 5. All work completed was a remodel of existing spaces that were completely transformed from offices, breakrooms, bathrooms, etc. into a new TSA Checkpoint on Level 6 and new escalator areas and tie into two previous Phase 1 work and future Phase 3 work on Level 5.

Due to this project being completed in an existing and operational airport, all materials needed to be shipped to an offsite warehouse and then delivered to the project site in small 4 to 6 pallet loads due to jobsite space restrictions and weight restrictions of the delivery areas

Grazzini completed extensive substrate correction and floor preparation at thinset areas to receive the new Large Format Quartz Tile. This task was even more complex than normal being that the tile size was 4 foot by 4 foot in size which required gradual sloping of substrates to tie together seamlessly but yet maintaining a required floor flatness of 1/8" in 10'.

Schedule, of course, was of upmost importance for the project. Grazzini's scope was contracted to be completed in 50-hour weeks due to hitting crucial milestone dates for completion to stay on course while working around DEN airport operation protocols, tenant requirements, and heavy travel season passenger traffic.



LUNSETH

Plumbing & Heating Co.
Mechanical Contractors & Designers
Grand Forks



Industrial - Commercial - Military - Government - Residential
Process Piping - Geothermal - Utilities - ASME & Code Repair
Professional Engineering - Design/Build
Prefabrication Shop - Industrial Controls & Automation

ND# 2315

MN# PM806831



Young Professionals

BENEFITS OF JOINING

Grow Your Social Capital

Build a substantial network of industry professionals by attending YP networking events. Take the time to build your contact list with individuals who are at the same place in their career. These relationships will be integral as you progress within the industry.

Learn From Your Peers

Get to know the industry and expand your knowledge. Our YP group offers integral leadership training opportunities to provide knowledge and resources to the next wave of construction professionals.

Get Motivated

Those who stay involved are more willing to stay on track with personal and professional goals.

Commitment & Cost

YP members pay \$100 per year and includes 4 training sessions, quarterly meetings and fun networking events.

Encourage Your Team To Participate

- Help foster long-term stakeholders in the construction industry leading to employee retention.
- Invest in the future of your company. Succession plans start here.
- Keep generation Y & Z engaged in industry trends and events.
- Networking will help enhance current and future customer relationships.

REGISTER TODAY!



**Congratulations
to all companies
on your award-
winning Excellence
in Construction
projects!**



sfsprinkler.com



j-berd.com



berdelectric.com

Form and Function



Stylish **Flooring**
with the Latest
Technologies

**Commercial &
Residential**

Over **45 Years**
of Industry
Experience



Proud to partner
with Mohawk, Shaw,
Mannington, Tarkett

26 1st Ave N., Waite Park
320-253-5078

mcicarpetonewaitepark.com

HERE
TO
FLOOR
YOU.



Mon-Fri 8 a.m. - 7 p.m. Sat 9 a.m. - 4 p.m. Sun Closed

Locations in Waite Park, Baxter, Mankato, Champlin & Sioux Falls, SD CT-SPAD0103061401



ACCOUNT MANAGER



ESTIMATOR



PROJECT MANAGER



SAFETY DIRECTOR



H.R. MANAGER



MARKETING MANAGER

You wear a lot of different hats, graphic designer shouldn't have to be one of them!

If your staff is stretched thin, you need a team player who can step up and take projects off your plate. We understand business-to-business marketing and can help you get the results you need. We're engaged and ready to help you with effective, affordable marketing solutions. Make every penny (and minute) count with a creative partner who can hit the ground running. **We're here for you!**

Solutions for Every Marketing Need

- Graphic design
- Flyers & posters
- Direct mail
- Presentations
- Signage & displays
- Brochures & catalogs
- Social media
- Marketing management
- Printing & mailing
- Incentive products

pernstainer
marketing · publications · partnerships

Need marketing help? Contact Todd Pernsteiner:
(952) 841-1111
todd@pernstainer.com
www.pernstainer.com



Molin Concrete Products Company is an innovative designer, manufacturer, and installer of high-quality PCI certified structural and architectural precast/prestressed concrete components. We work with your project team from design development to completion, serving as a single source for the complete building system.



© Bergerson Photography

MOLIN

Quality Concrete Solutions
since 1897



Designers » Manufacturers » Installers
of Precast / Prestressed Concrete

Insulated and Non-insulated Architectural Precast Wall Panels and Structural Precast

Precast Wall Panels | Hollow Core | Precast Columns

Prestressed Beams | Stadia Riser | Precast Stairs

MOLIN.com



Visit us on social media

651.786.7722 800.336.6546
415 Lilac Street, Lino Lakes, MN 55014

Proven. Reliable. Craftsmanship.



A grand scale historical renovation or a beloved school emblem, Grazzini Brothers has the knowledge and the skill required to complete any project.

We provide a full range of tile, terrazzo, stone, and floor covering installation services. Grazzini Brothers has the financial security, bonding capacity, and credit experience to undertake any size project throughout the country.

Whether you are looking to install standard tile floors, an intricate granite water feature, or a complex terrazzo design, we have the expertise, craftworkers, and equipment necessary to complete the job on time, within budget and to the highest quality standards.

Grazzini Brothers & Company

www.grazzini.com

1175 Eagan Industrial Road | St. Paul, MN 55121
651-452-2700

Leading the Industry for 100 years.